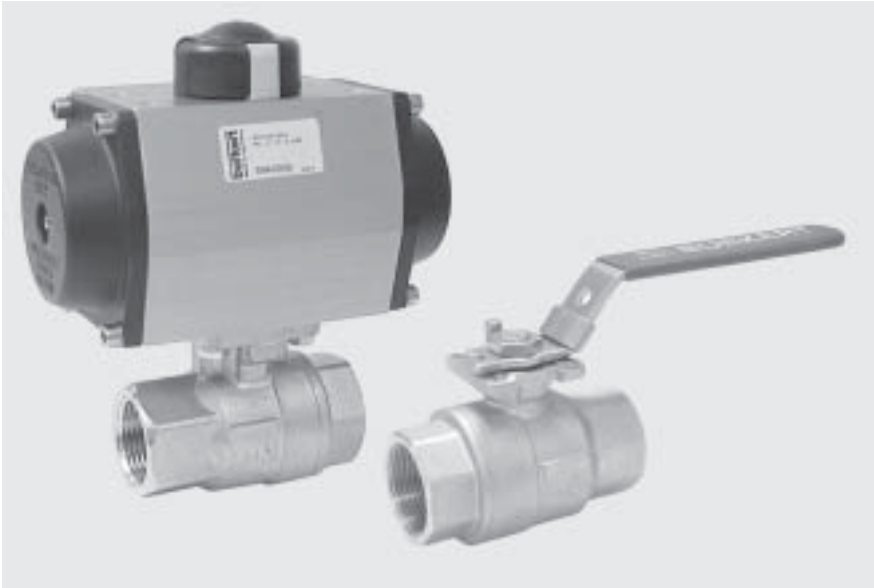


Quarter Turn Ball Valve Systems

2 Pcs Body Design with Threaded Ends



Features

- ▶ Modular Program ball valve system
- ▶ High quality investment cast stainless steel body and ends
- ▶ 2 pcs body full bore design, 2 way
- ▶ Blow out proof stem
- ▶ Disc spring loaded stem seal
- ▶ Lever operated or pneumatic actuated version
- ▶ Electric actuated version on request
- ▶ Total system solution with Burkert other range of products

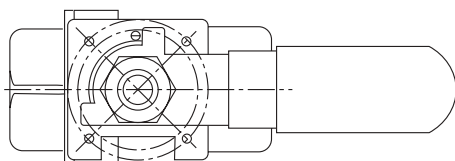
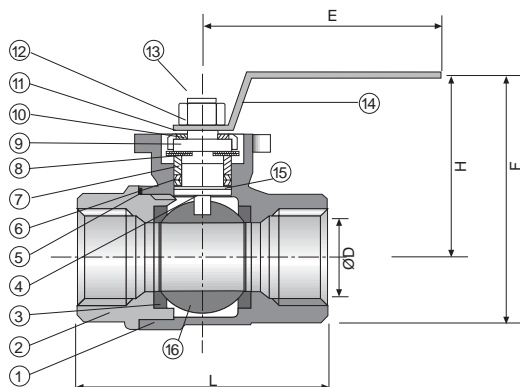
Valve Specifications

- . Sizes : 1/2" to 2" (larger sizes up to 3" on request)
- . Connections : BSP female thread
(other connections on request)
- . Pressure range : 0~100 bar (1500psi)
- . Medium temperature : -10~+120°C
(higher temperature range on request)
- . Options : Anti-static Device, Locking device,
Electrical position feedback limit switches

Order Chart (Lever Operated Ball Valve)

Size	Kv (m ³ /h)	Order No.	Weight (kg)
1/2"	11.0	432047M	0.51
3/4"	25.0	432048W	0.73
1"	38.0	432049X	1.02
1 1/4"	68.0	432050U	1.39
1 1/2"	103.0	432051R	2.20
2"	199.0	432052J	3.61

Material / Dimensions (mm unless otherwise indicated)



No.	Description	Materials
1	Body	ASTM A351 Gr. CF8M
2	End Cap	ASTM A351 Gr. CF8M
3	Seat	RPTFE
4	Thrust Washer	PTFE
5	Body Gasket	PTFE
6	Packing	PTFE
7	Gland	SS304
8	Disc Spring	SS301
9	Gland Nut	SS304
10	Tab Washer	SS304
11	Handle	SS304
12	Handle Nut	SS304
13	Stem	SS316
14	Handle	SS304
15	O-Ring	VITON
16	Ball	ASTM A351 Gr. CF8M

Size	ØD	L	H	E	F
1/2"	15	75	71	114	87
3/4"	20	80	75	133	97
1"	25	90	79	133	110
1 1/4"	32	110	88	187	127
1 1/2"	40	120	93	187	131
2"	50	140	105	187	155

burkert
Fluid Control Systems

Quarter Turn Ball Valve Systems

2 Pcs Body Design with Threaded Ends

Actuator Specifications

Quarter turn, rack and pinion, double piston design, spring return or double acting

Materials : Extruded aluminium alloy, gold anodized housing
 : Pressure die cast aluminium alloy, black epoxy coated end caps
 : Carbon steel, zinc plated pinion
 : Pressure die cast aluminium alloy piston
 : Acetal resin guide
 : NBR seal (Viton on request)

Max. working pressure : 8 bar
 Temperature range : -20°C to +100°C
 Accessories option : Pilot solenoid valves, position feedback limit switches,
 : Manual override, Smart I/P positioners (integrated PID control)

(for further details, please refer to Burkert Pneumatic Rotary Actuators data sheet)

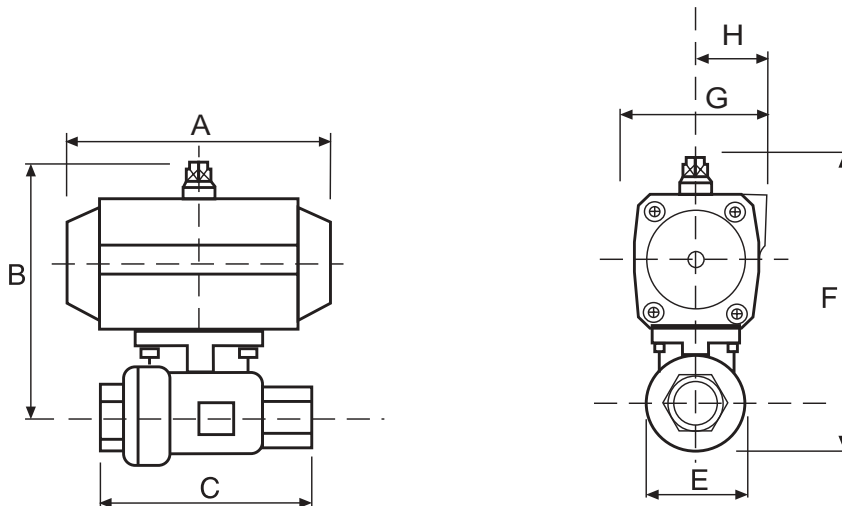
Order Chart (Pneumatic Actuated Ball Valve)

Valve Size	Kv (m ³ /h)	Pressure Range ¹⁾ (bar)	Actuator	Air Supply ²⁾ (bar)	Weight (kg)	Order No.
Double Acting Pneumatic Actuated Stainless Steel Ball Valve						
1/2"	11.0	0-10	AP1DA	4	1.8	SN40042
3/4"	25.0	0-10	AP2DA	4	2.4	SN40580
1"	38.0	0-10	AP2DA	4	3.0	SN40045
1 1/4"	68.0	0-10	AP2DA	5	3.4	SN40046
1 1/2"	103.0	0-10	AP3DA	4	5.6	SN40048
2"	199.0	0-10	AP3DA	4	7.0	SN40049
Spring Return Pneumatic Actuated Stainless Steel Ball Valve						
1/2"	11.0	0-10	AP1SR	5.5	2.0	SN40597
3/4"	25.0	0-10	AP2SR	5	2.6	SN40076
1"	38.0	0-10	AP3SR	4	4.2	SN40053
1 1/4"	68.0	0-10	AP3SR	5.5	4.8	SN40598
1 1/2"	103.0	0-10	AP3SR	5.5	5.8	SN40599
2"	199.0	0-10	AP3.5SR	5	8.3	SN40601

1) Higher pressure version on request

2) For other air supply pressure, please consult Burkert

Dimensions (mm unless otherwise indicated)



Double Acting Version

Valve Size	Actuator	A	B	C	E	F	G	H
1/2"	AP1DA	137	124	75	35	140	60	41
3/4"	AP2DA	150	143	80	45	165	73	45
1"	AP2DA	150	145	90	51	174	73	45
1 1/4"	AP2DA	150	148	110	63	187	73	45
1 1/2"	AP3DA	204	174	120	75	212	85	50
2"	AP3DA	204	184	140	95	234	85	50

Spring Return Version

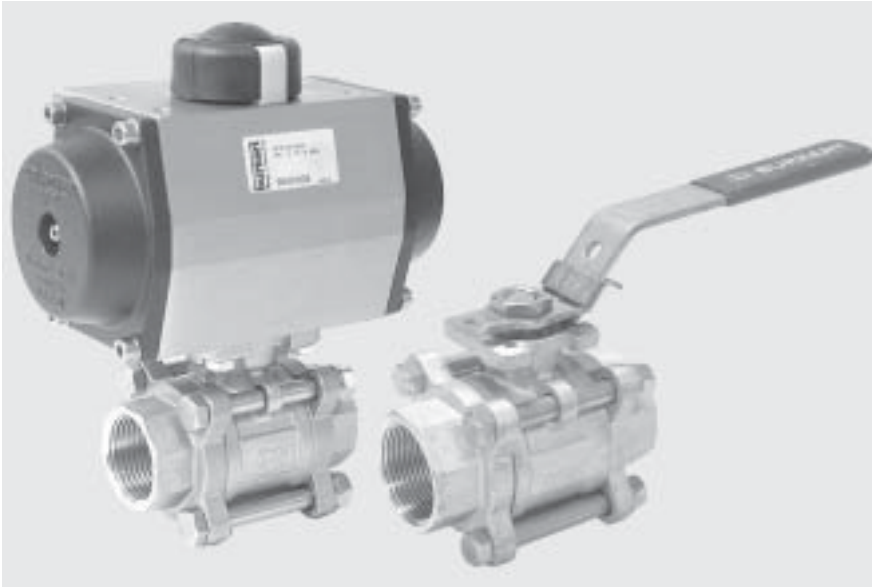
Valve Size	Actuator	A	B	C	E	F	G	H
1/2"	AP1SR	137	124	75	35	140	60	41
3/4"	AP2SR	150	143	80	45	165	73	45
1"	AP3SR	204	160	90	51	191	85	50
1 1/4"	AP3SR	204	165	110	63	204	85	50
1 1/2"	AP3SR	204	174	120	75	212	85	50
2"	AP3.5SR	230	194	140	95	244	98	53

In case of special application requirements, please consult for advice.

We reserve the right to make technical changes without notice.

Quarter Turn Ball Valve Systems

3 Pcs Body Design with Threaded Ends



Features

- ▶ Modular Program ball valve system
- ▶ High quality investment cast stainless steel body and ends
- ▶ 3 pcs body full bore design, 2 way
- ▶ Blow out proof stem
- ▶ Disc spring loaded stem seal
- ▶ Lever operated or pneumatic actuated version
- ▶ Electric actuated version on request
- ▶ Total system solution with Burkert other range of products

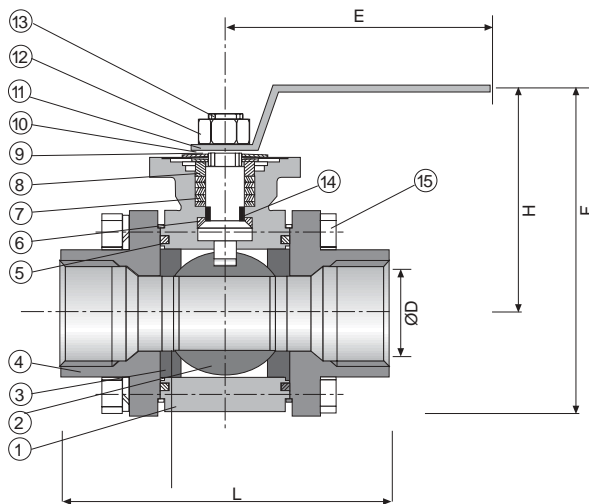
Valve Specifications

- . Sizes : 1/2" to 2" (larger sizes up to 4" on request)
- . Connections : BSP female thread
(other connections, NPT, socket weld, butt weld on request)
- . Pressure range : 0-64 bar (1000psi)
- . Medium temperature : -10~+120°C
(higher temperature range on request)
- . Options : Anti-static Device, Locking device,
Electrical position feedback limit switches

Order Chart (Lever Operated Ball Valve)

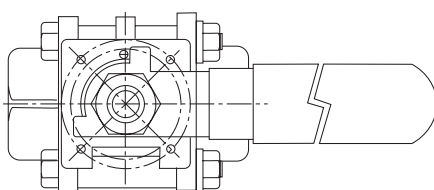
Size	Kv (m3/h)	Order No.	Weight (kg)
1/2"	12.0	SN00306	0.75
3/4"	27.0	SN00307	0.97
1"	38.0	SN00308	1.35
1 1/4"	70.0	SN00309	1.89
1 1/2"	103.0	SN00310	2.87
2"	206.0	SN00311	4.64

Material / Dimensions(mm unless otherwise indicated)



No.	Description	Materials
1	Body	ASTM A351 Gr. CF8M
2	Ball	ASTM A351 Gr. CF8M
3	Seat	RPTFE
4	End Cap	ASTM A351 Gr. CF8M
5	Body Gasket	PTFE
6	Thrust Washer	PTFE
7	Packing	PTFE
8	Gland	SS304
9	Disc Spring	SS301
10	Gland Nut	SS304
11	Handle	SS304
12	Stem Nut	SS304
13	Stem	SS316
14	O-Ring	VITON
15	Bolt & Nut	SS304

Size	ØD	L	H	E	F
1/2"	15	75	75	114	97
3/4"	20	80	79	133	102
1"	25	90	81	133	110
1 1/4"	32	110	90	187	128
1 1/2"	40	120	96	187	136
2"	50	140	107	187	152



burkert
Fluid Control Systems

Quarter Turn Ball Valve Systems

3 Pcs Body Design with Threaded Ends

Actuator Specifications

Quarter turn, rack and pinion, double piston design, spring return or double acting

Materials : Extruded aluminium alloy, gold anodized housing
 : Pressure die cast aluminium alloy, black epoxy coated end caps
 : Carbon steel, zinc plated pinion
 : Pressure die cast aluminium alloy piston
 : Acetal resin guide
 : NBR seal (Viton on request)

Max. working pressure : 8 bar
 Temperature range : -20°C to +100°C
 Accessories option : Pilot solenoid valves, position feedback limit switches,
 : Manual override, Smart I/P positioners (integrated PID control)

(for further details, please refer to Burkert Pneumatic Rotary Actuators data sheet)

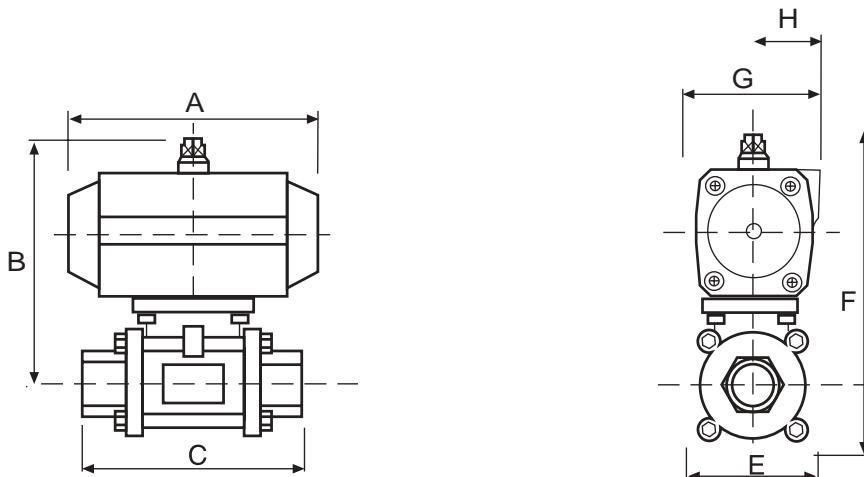
Order Chart (Pneumatic Actuated Ball Valve)

Valve Size	Kv (m ³ /h)	Pressure Range ¹⁾ (bar)	Actuator	Air Supply ²⁾ (bar)	Weight (kg)	Order No.
Double Acting Pneumatic Actuated Stainless Steel Ball Valve						
1/2"	12.0	0-10	AP1DA	4	2.8	SN40023
3/4"	27.0	0-10	AP2DA	4	2.6	SN40613
1"	38.0	0-10	AP2DA	4	3.0	SN40026
1 1/4"	70.0	0-10	AP2DA	5	3.6	SN40027
1 1/2"	103.0	0-10	AP3DA	4	6.3	SN40029
2"	206.0	0-10	AP3DA	4	7.6	SN40030
Spring Return Pneumatic Actuated Stainless Steel Ball Valve						
1/2"	12.0	0-10	AP1SR	5.5	2.2	SN40602
3/4"	27.0	0-10	AP2SR	5	2.8	SN40078
1"	38.0	0-10	AP3SR	4	4.6	SN40034
1 1/4"	70.0	0-10	AP3SR	5.5	5.1	SN40609
1 1/2"	103.0	0-10	AP3SR	5.5	6.5	SN40611
2"	206.0	0-10	AP3.5SR	5	9.4	SN40619

1) Higher pressure version on request

2) For other air supply pressure, please consult Burkert

Dimensions (mm unless otherwise indicated)



Double Acting Version

Valve Size	Actuator	A	B	C	E	F	G	H
1/2"	AP1DA	137	122	75	48	144	60	41
3/4"	AP2DA	150	145	80	54	169	73	45
1"	AP2DA	150	148	90	58	174	73	45
1 1/4"	AP2DA	150	150	110	71	185	73	45
1 1/2"	AP3DA	204	173	120	81	213	85	50
2"	AP3DA	204	185	140	95	230	85	50

Spring Return Version

Valve Size	Actuator	A	B	C	E	F	G	H
1/2"	AP1SR	137	122	75	48	144	60	41
3/4"	AP2SR	150	145	80	54	168	73	45
1"	AP3SR	204	162	90	58	191	85	50
1 1/4"	AP3SR	204	164	110	71	202	85	50
1 1/2"	AP3SR	204	173	120	81	213	85	50
2"	AP3.5SR	230	195	140	95	240	98	53

In case of special application requirements, please consult for advice.

We reserve the right to make technical changes without notice.

Quarter Turn Ball Valve Systems

2 Pcs Body Design with Flange Ends



Features

- ▶ Modular Program ball valve system
- ▶ High quality investment cast stainless steel body and ends
- ▶ 2 pcs body full bore design, 2 way
- ▶ Blow out proof stem
- ▶ Disc spring loaded stem seal
- ▶ Lever operated or pneumatic actuated version
- ▶ Electric actuated version on request
- ▶ Total system solution with Burkert other range of products

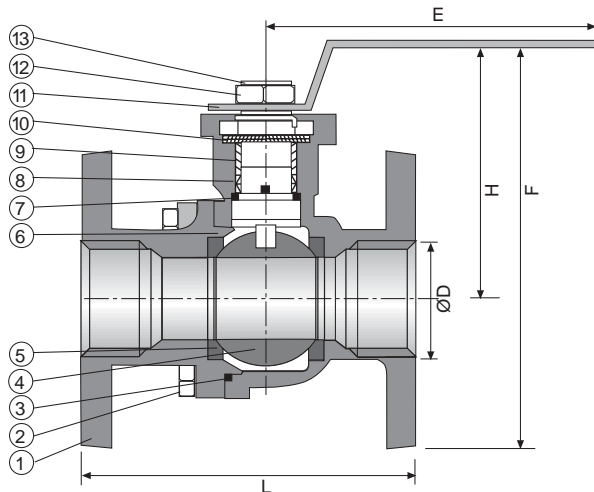
Specifications

- . Sizes : 1/2" to 4" (larger sizes up to 8" on request)
- . Connections : Flange according to ANSI B16.5 150 lbs RF (other connections, JIS, DIN on request)
- . Pressure range : According to ANSI B 16.34
- . Medium temperature : -10~+120°C (higher temperature range on request)
- . Options : Anti-static Device, Fire-safe design, Locking device, Electrical position feedback limit switches, ANSI B16.5 300 lbs RF

Order Chart (Lever Operated Ball Valve)

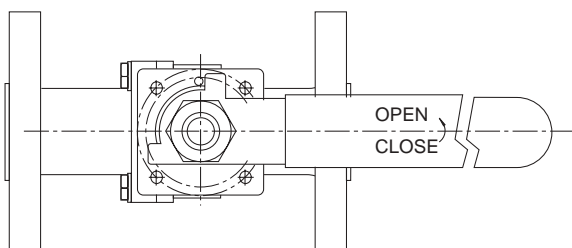
Size	Kv (m ³ /h)	Order No.	Weight (kg)
1/2"	10.0	SN30283	1.68
3/4"	42.0	SN30284	2.07
1"	85.0	SN30285	3.22
1 1/4"	137.0	SN30286	4.40
1 1/2"	231.0	SN30287	5.72
2"	369.0	SN30288	8.63
2 1/2"	618.0	SN30289	13.60
3"	876.0	SN30290	18.02
4"	1717.0	SN30291	28.70

Material / Dimensions(mm unless otherwise indicated)



No.	Description	Materials
1	Body	ASTM A351 Gr. CF8M
2	Hex Bolt	SS304
3	Gasket	PTFE
4	Ball	ASTM A351 Gr. CF8M
5	Seat	RPTFE
6	Thrust Washer	PTFE
7	O Ring	Viton
8	Gland Packing	PTFE
9	Gland	SS304
10	Disc Spring	SS301
11	Handle	SS304
12	Stem Nut	SS304
13	Stem	SS316

Size	ØD	L	H	E	F
1/2"	13	108	82	114	126
3/4"	20	117	87	114	133
1"	25	127	91	133	143
1 1/4"	32	140	98	187	153
1 1/2"	40	165	118	187	177
2"	50	178	124	187	190
2 1/2"	65	190.5	140	410	250
3"	76	203	150	410	260
4"	100	229	170	410	305



bürkert
Fluid Control Systems

Quarter Turn Ball Valve Systems

2 Pcs Body Design with Flange Ends

Actuator Specifications

Quarter turn, rack and pinion, double piston design, spring return or double acting

Materials : Extruded aluminium alloy, gold anodized housing
 : Pressure die cast aluminium alloy, black epoxy coated end caps
 : Carbon steel, zinc plated pinion
 : Pressure die cast aluminium alloy piston
 : Acetal resin guide
 : NBR seal (Viton on request)

Max. working pressure : 8 bar
 Temperature range : -20°C to +100°C
 Accessories option : Pilot solenoid valves, position feedback limit switches,
 : Manual override, Smart I/P positioners (integrated PID control)

(for further details, please refer to Burkert Pneumatic Rotary Actuators data sheet)

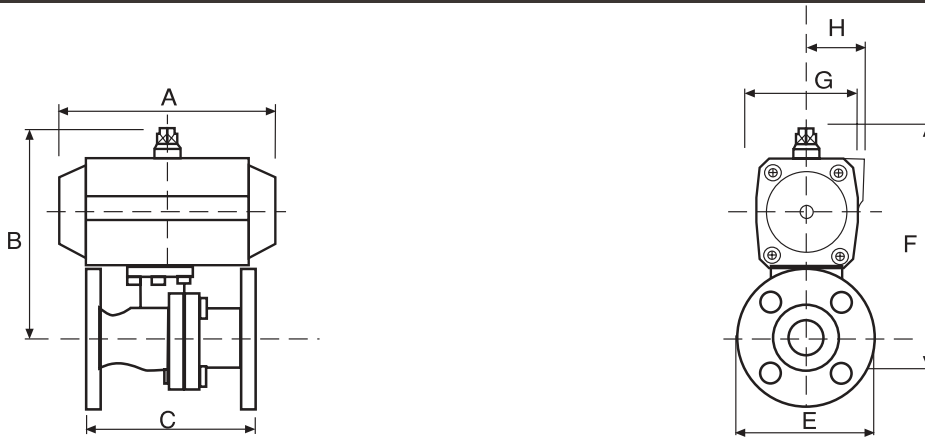
Order Chart (Pneumatic Actuated Ball Valve)

Valve Size	Kv (m ³ /h)	Pressure Range ¹⁾ (bar)	Actuator	Air Supply ²⁾ (bar)	Weight (kg)	Order No.
Double Acting Pneumatic Actuated Stainless Steel Ball Valve						
1/2"	10.0	0-10	AP1DA	4	2.6	SN40574
3/4"	42.0	0-10	AP1DA	4	3.0	SN40575
1"	85.0	0-10	AP2DA	4	4.9	SN40576
1 1/4"	137.0	0-10	AP2DA	5	6.1	SN40577
1 1/2"	231.0	0-10	AP3DA	4	8.7	SN40578
2"	369.0	0-10	AP3DA	4	12	SN40579
2 1/2"	618.0	0-10	AP3.5DA	4	18.0	SN40581
3"	876.0	0-10	AP4-DA	4	24.0	SN40583
4"	1717.0	0-10	AP4.5DA	4	38.0	SN40584
Spring Return Pneumatic Actuated Stainless Steel Ball Valve						
1/2"	10.0	0-10	AP1-SR	5.5	2.9	SN40585
3/4"	42.0	0-10	AP2SR	5	3.9	SN40586
1"	85.0	0-10	AP3SR	4	6.4	SN40587
1 1/4"	137.0	0-10	AP3SR	5.5	7.7	SN40588
1 1/2"	231.0	0-10	AP3SR	5.5	9.0	SN40590
2"	369.0	0-10	AP3.5SR	5	13.3	SN40592
2 1/2"	618.0	0-10	AP4SR	5.5	20.0	SN40593
3"	876.0	0-10	AP4.5SR	5	28.5	SN40594
4"	1717.0	0-10	AP5SR	5	43.0	SN40596

1) Higher pressure version on request

2) For other air supply pressure, please consult Burkert

Dimensions (mm unless otherwise indicated)



Double Acting Version

Valve Size	Actuator	A	B	C	E	F	G	H
1/2"	AP1DA	137	135	108	89	179	60	41
3/4"	AP1DA	137	140	117	98	186	60	41
1"	AP2DA	150	165	127	108	217	73	45
1 1/4"	AP2DA	150	167	140	117	222	73	45
1 1/2"	AP3DA	204	203	165	127	262	85	50
2"	AP3DA	204	211	178	152	277	85	50
2 1/2"	AP3.5DA	230	225	190	178	315	98	53
3"	AP4DA	271	248	203	190	358	110	58
4"	AP4.5DA	305	273	229	229	408	128	69

Spring Return Version

Valve Size	Actuator	A	B	C	E	F	G	H
1/2"	AP1SR	137	135	108	89	179	60	41
3/4"	AP2SR	150	156	117	98	202	73	45
1"	AP3SR	204	182	127	108	234	85	50
1 1/4"	AP3SR	204	184	140	117	239	85	50
1 1/2"	AP3SR	204	203	165	127	262	85	50
2"	AP3.5SR	230	221	178	152	287	98	53
2 1/2"	AP4SR	271	230	190	178	330	110	58
3"	AP4.5SR	305	275	203	190	385	128	69
4"	AP5SR	360	286	229	229	421	140	-

In case of special application requirements, please consult for advice.

We reserve the right to make technical changes without notice.

Quarter Turn Ball Valve Systems 3-Way with Threaded Ends



Features

- ▶ Modular Program ball valve system
- ▶ High quality investment cast stainless steel body and ends
- ▶ 4 pcs body reduced bore design, 3 way, L port or T port versions
- ▶ Blow out proof stem
- ▶ Disc spring loaded stem seal
- ▶ Lever operated or pneumatic actuated version
- ▶ Electric actuated version on request
- ▶ Total system solution with Burkert other range of products

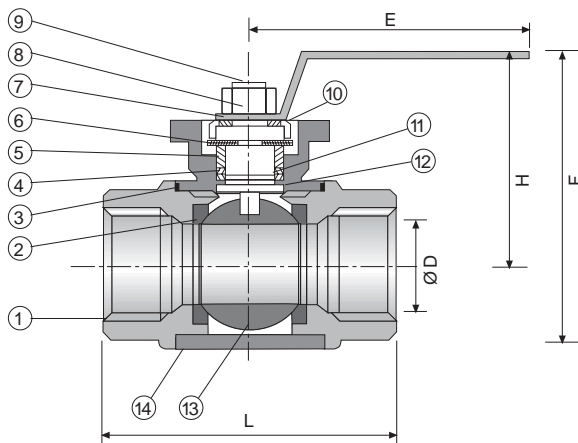
Valve Specifications

- . Sizes : 1/2" to 2"
- . Connections : BSP female thread
(other connections on request)
- . Pressure range : 0-63 bar (900psi)
- . Medium temperature : -10~+120°C
(higher temperature range on request)
- . Options : Anti-static Device, Locking device,
Electrical position feedback limit switches

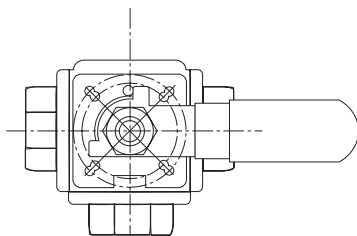
Order Chart (Lever Operated Ball Valve)

Size	Kv (m ³ /h)	Order No. (L-Port)	Order No. (T-Port)	Weight (kg)
1/2"	8.0	SN30277	SN30671	0.71
3/4"	12.0	SN30278	SN30672	1.06
1"	27.0	SN30279	SN30673	1.66
1 1/4"	38.0	SN30280	SN30676	2.75
1 1/2"	70.0	SN30281	SN30664	3.40
2"	103.0	SN30282	SN30674	6.65

Material / Dimensions (mm unless otherwise indicated)



No.	Description	Materials
1	End Cap	ASTM A351 Gr. CF8M
2	Seat	RPTFE
3	Body Gasket	PTFE
4	Packing	PTFE
5	Gland	SS304
6	Disc Spring	SS301
7	Handle	SS304
8	Handle Nut	SS304
9	Stem	SS316
10	Gland Nut	SS304
11	O-Ring	VITON
12	Thrust Washer	PTFE
13	Ball	ASTM A351 Gr. CF8M
14	Body	ASTM A351 Gr. CF8M



Size	ØD	L	H	E	F
1/2"	12	80	73	114	95
3/4"	15	87.5	78	133	107
1"	20	100	83	133	112
1 1/4"	25	123	92	187	129
1 1/2"	32	142	98	187	135
2"	40	171	124	187	155

PORT TYPE	1	2	3	4
L				
T				

burkert
Fluid Control Systems

Quarter Turn Ball Valve Systems

3-Way with Threaded Ends

Actuator Specifications

Quarter turn, rack and pinion, double piston design, spring return or double acting

Materials : Extruded aluminium alloy, gold anodized housing
 : Pressure die cast aluminium alloy, black epoxy coated end caps
 : Carbon steel, zinc plated pinion
 : Pressure die cast aluminium alloy piston
 : Acetal resin guide
 : NBR seal (Viton on request)

Max. working pressure : 8 bar
 Temperature range : -20°C to +100°C
 Accessories option : Pilot solenoid valves, electrical position feedback limit switches,
 : Manual override, Smart I/P positioners (integrated PID control)

(for further details, please refer to Burkert Pneumatic Rotary Actuators data sheet)

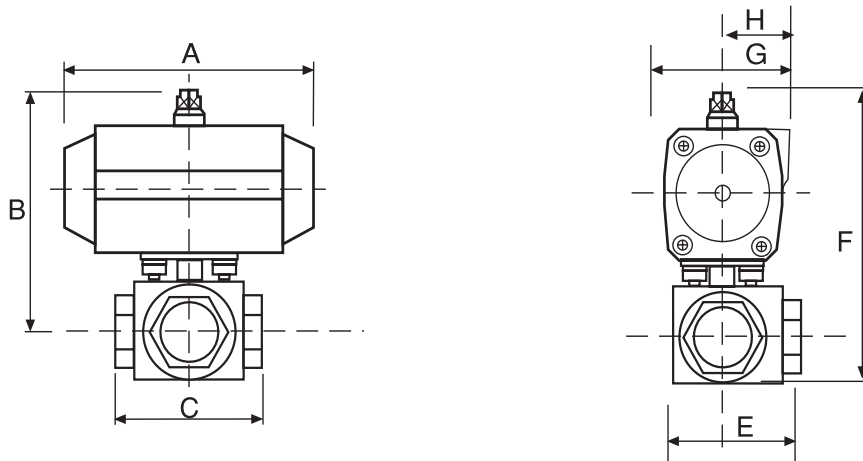
Order Chart (Pneumatic Actuated Ball Valve)

Valve Size	Kv (m ³ /h)	Pressure Range ¹⁾ (bar)	Actuator	Air Supply ²⁾ (bar)	Weight (kg)	Order No. L-Port	Order No. T-Port
Double Acting Pneumatic Actuated Stainless Steel Ball Valve							
1/2"	8.0	0-10	AP1DA	4	2	SN30643	SN40615
3/4"	12.0	0-10	AP2DA	4	3	SN30415	SN40616
1"	27.0	0-10	AP2DA	4	3.7	SN30625	SN40617
1 1/4"	38.0	0-10	AP2DA	5	4.8	SN40600	SN40618
1 1/2"	70.0	0-10	AP3DA	4	6.8	SN30424	SN40620
2"	103.0	0-10	AP3DA	4	10	SN40603	SN40621
Spring Return Pneumatic Actuated Stainless Steel Ball Valve							
1/2"	8.0	0-10	AP1SR	5.5	2.2	SN40604	SN40622
3/4"	12.0	0-10	AP2SR	5	3.2	SN40605	SN40623
1"	27.0	0-10	AP3SR	4	4.8	SN40606	SN40624
1 1/4"	38.0	0-10	AP3SR	5.5	6	SN40607	SN40625
1 1/2"	70.0	0-10	AP3SR	5.5	7	SN40608	SN40626
2"	103.0	0-10	AP3.5SR	5	11.8	SN40610	SN40628

1) Higher pressure version on request

2) For other air supply pressure, please consult Burkert

Dimensions (mm unless otherwise indicated)



Double Acting Version

Valve Size	Actuator	A	B	C	E	F	G	H
1/2"	AP1DA	137	130	80	55	152	60	41
3/4"	AP2DA	150	141	88	65	170	73	45
1"	AP2DA	150	149	100	72	178	73	45
1 1/4"	AP2DA	150	151	123	90	188	73	45
1 1/2"	AP3DA	204	179	142	112	216	85	50
2"	AP3DA	204	198	171	130	229	85	50

Spring Return Version

Valve Size	Actuator	A	B	C	E	F	G	H
1/2"	AP1SR	137	130	80	55	152	60	41
3/4"	AP2SR	150	141	88	65	170	73	45
1"	AP3SR	204	166	100	72	195	85	50
1 1/4"	AP3SR	204	168	123	90	205	85	50
1 1/2"	AP3SR	204	179	142	112	216	85	50
2"	AP3.5SR	230	208	171	130	239	98	53

In case of special application requirements, please consult for advice.

We reserve the right to make technical changes without notice.