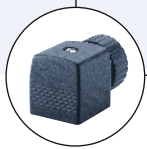




Type 6213 HP can be combined with...



Type 2508

Cable plug



Type 1078

Timer unit
(only for AC)

2/2-way Solenoid Valve for fluids and gases, 0 - 10 bar, G 1/2 - G 1

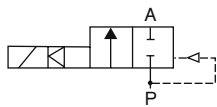
- Switches without differential pressure
- For gases and liquids
- Forced coupled diaphragm system
- Push-over coil with high performance
- Anti-waterhammer, low noise
- High flow rate (K_v value)

The Type 6213 HP is a 2/2-way normally closed solenoid valve with a forced coupled diaphragm system.

Note

The differences between standard version 6213 and Type 6213 HP - high performance valve are the higher spring forces combined with high power coils. The valve switches without differential pressure from 0 bar with gases and liquids.

Circuit function A



Servo-assisted 2/2-way valve, normally closed, with 2-way pilot control

Technical data	
Orifice	DN 13 - 20
Body material	Brass acc. to DIN EN 50930-6, (stainless steel on request)
Coil material	Epoxy
Coil insulation class	H
Inner part of valve	Stainless steel and PPS
Seal material	NBR (FKM and EPDM on request)
Media	neutral fluids, water, hydraulic oil, oil and fats without additives
Media temperature	
NBR	-10 to +80°C
FKM	0 to +120°C
EPDM	-30 to +120°C
Ambient temperature	max. +55°C
Voltages	24 V DC 24/230 V 50-60 Hz (other voltages on request)
Voltage tolerance	±10%
Duty cycle	100% continuous rating
Electrical connection	Tag connector acc. to DIN EN 175301-803 Form A (previously DIN 43650) for cable plug Type 2508 (see Ordering chart for accessory)
Protection class	IP 65 with cable plug
Installation	As required, preferably with actuator upright
Response times ¹⁾	150 - 1000 ms (depending on orifice and differential pressure)

¹⁾ Measured at valve outlet at 6 bar and +20°C

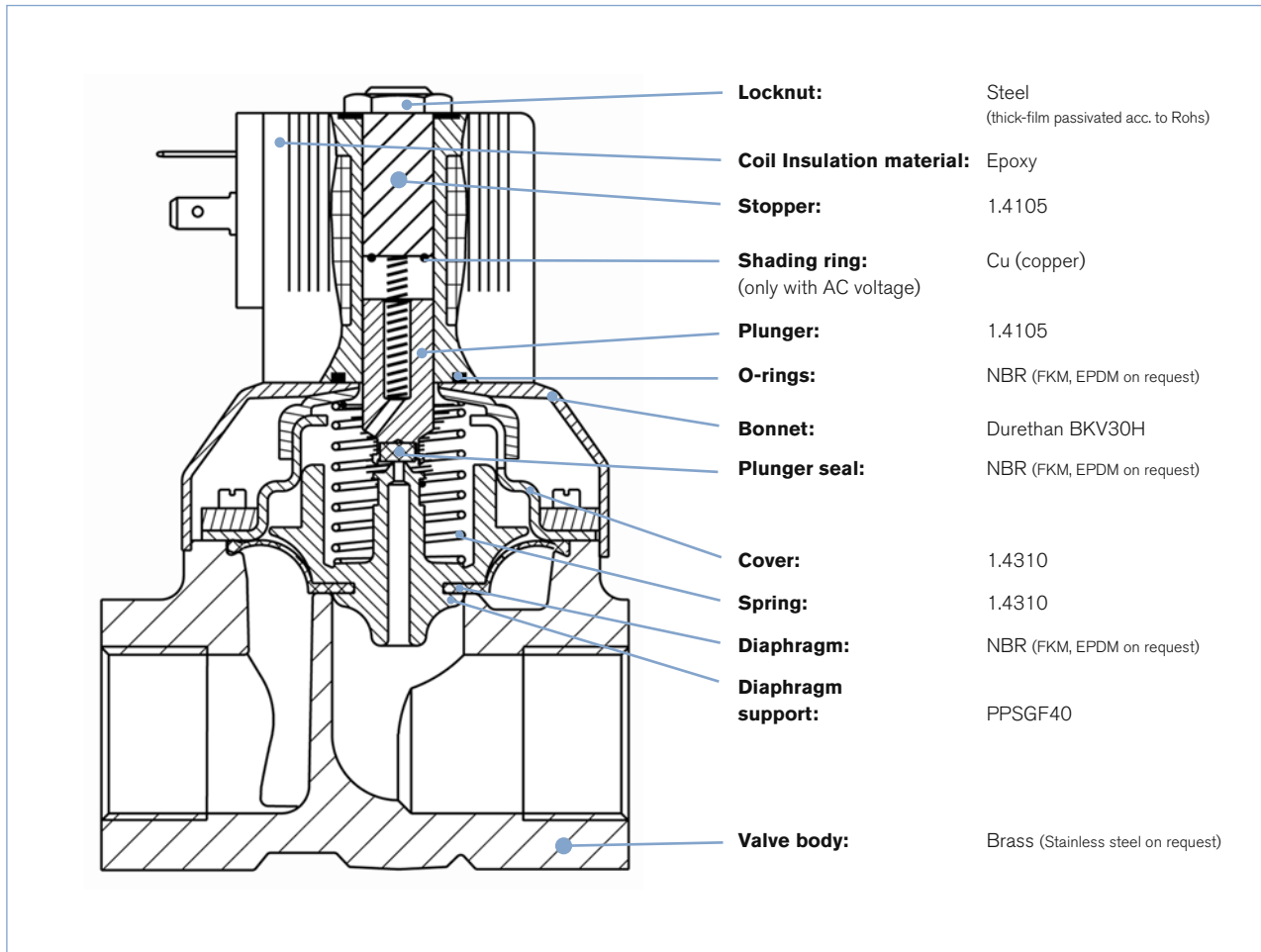
Opening pressure build-up 0 to 90%
Closing pressure decay 100 to 10%

Technical data (cont)

Power consumption				
Coil size DN	Inrush AC [VA]	Hold (hot coil) ¹⁾		Weight [kg]
		AC [VA/W]	DC [W]	
13	125	37/16	16 (17)	0.45
20	140	37/16	16 (17)	1.38

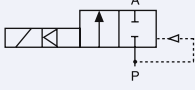
¹⁾ Values in brackets at coil temperature 20 °C

Materials



Ordering chart for valves (other versions on request)




Valves with brass body, without cable plug

Circuit function	Port connection	Orifice [mm]	Kv value water [m ³ /h] ¹⁾	Pressure range [bar] ²⁾	Item no. per voltage/frequency [V/Hz]		
					024/DC	024/50-60	230/50-60
A 2/2-way valve NC 	Brass body, NBR diaphragm						
	G 1/2	13	3.6	0 - 10	178 900	178 899	178 902
	G 3/4	13	3.6	0 - 10	178 904	178 903	178 905
	G 3/4	20	8.3	0 - 10	178 907	178 906	178 908
	G 1	20	8.3	0 - 10	178 910	178 909	178 911

¹⁾ Measured at +20°C, 1 bar ²⁾ pressure at valve inlet and free outlet, ²⁾ Pressure data [bar]: Overpressure with respect to atmospheric pressure.

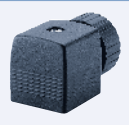
Please note that the cable plug has to be ordered separately, see Ordering chart for accessory below and separate datasheet, Type 2508

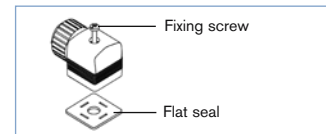
i Further versions on request

-  **Port connection**
NPT, Rc thread
-  **Voltage**
Non-standard voltages
-  **Material**
Seal FKM and EPDM
Body material stainless steel

Ordering chart for accessory

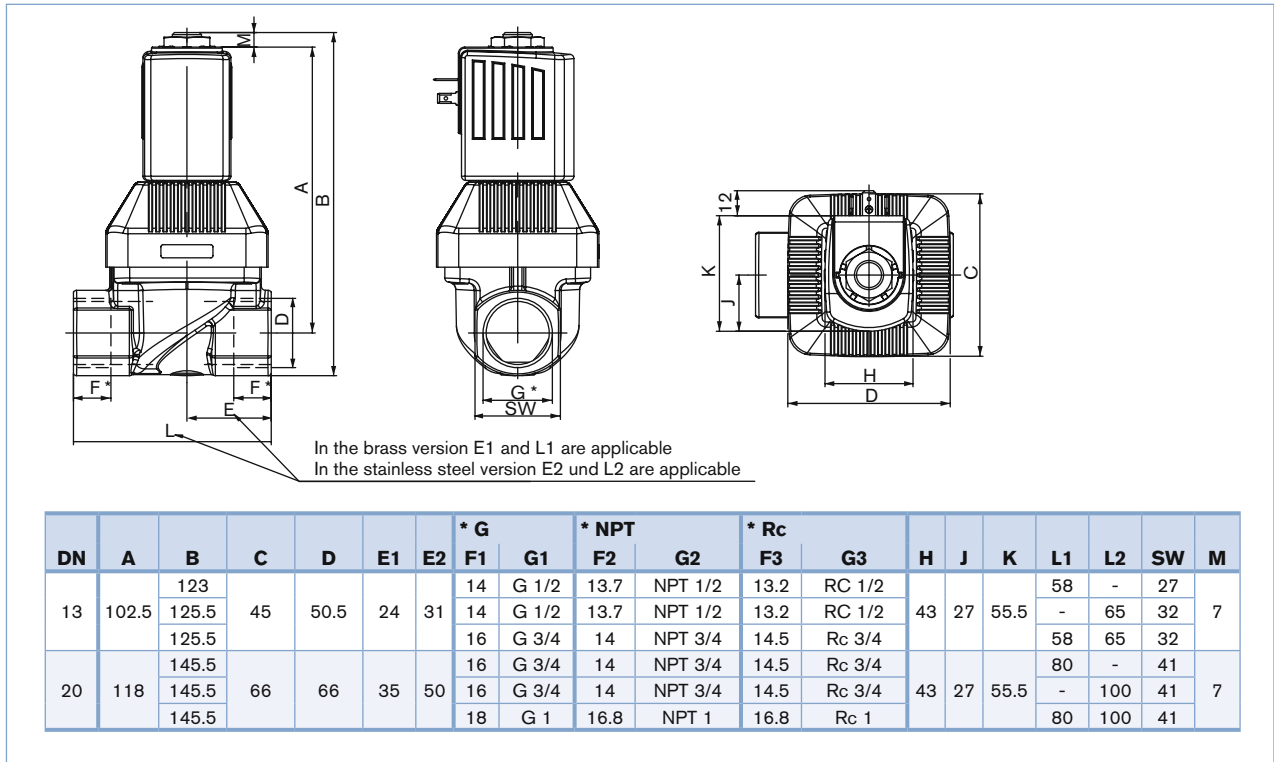
Cable plug Type 2508 according to DIN EN 175301-803 Form A

	Circuitry	Voltage / frequency	Item no.
	None (standard)	0 - 250 V AC/DC	008 376
	further versions see datasheet Type 2508		



The delivery of a cable plug includes the flat seal and the fixing screw. For other cable plug versions acc. to DIN EN 175301-803 Form A (previously DIN 43650), see Accessories or separate datasheet Type 2508.

Dimensions [mm]



DTS 1000075652 EN Version: B Status: RL (released | freigegeben | valide) printed: 13.03.2008

To find your nearest Bürkert facility, click on the orange box → www.burkert.com

In case of special application conditions, please consult for advice.

We reserve the right to make technical changes without notice.
© Christian Bürkert GmbH & Co. KG

0803/3_EU-en_00891959